

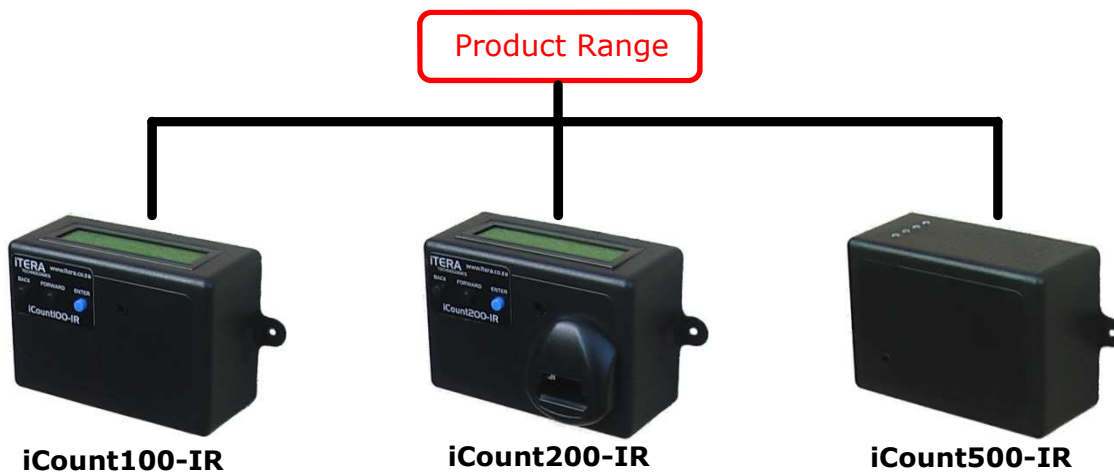
Infrared Beam Counters (IR)

Our infrared beam people counting systems use an infrared beam as the detection method. A count is registered whenever a person, or object, breaks the beam.

The transmitter emits a high power infrared beam which allows the system to operate without interference from ambient lighting or other infrared sources.

The current time, date and daily count are displayed and updated on the liquid crystal display (LCD). The counter logs the count on an hourly or daily basis and saves it to memory for later retrieval.

These counters are ideal for monitoring traffic at entrance/exit points of virtually any retail store, financial institution, casino, shopping centre, place of worship and exhibitions, just to mention a few.



Key Advantages

- Auto reset to zero at midnight
- Divide count by two option
- Hourly or daily data logging
- Selectable staff subtraction percentage
- Data saved to non-volatile memory which ensures that data is not lost during power failures
- Flexible mounting options to cater for any entrance configuration
- 1 year warranty

Data Retrieval

iCount100-IR



Wed 21/03/12
Total: 1024

Daily logged data

Wed 21/03/12
16:00-17:00 254

Hourly logged data

Read data directly from the screen. Scroll through all the saved data using the buttons.

iCount200-IR



- Step 1**
 - Insert the iButton into the counter to download the saved data.
- Step 2**
 - Launch the iCapture program and transfer the data from the iButton onto the PC via the USB port.
- Step 3**
 - Export the data from the database in a comma separated value (CSV) file which will open directly in Microsoft Excel or other spreadsheet package.

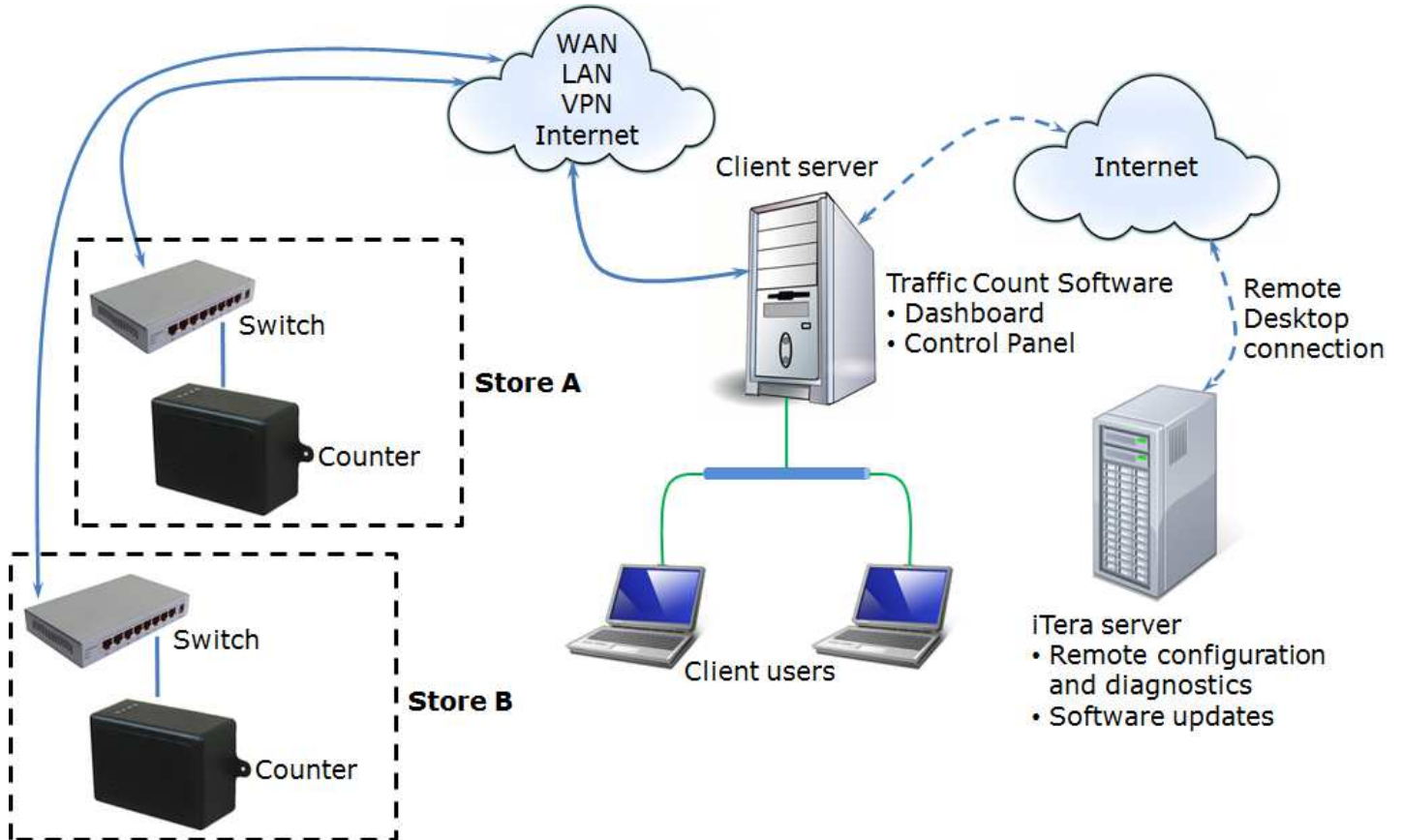
CSV file

	A	B	C
1	People Count Data	Fourways	
2	Date	Time Interval	Count
3	16/05/2008	08:00 - 09:00	15
4	16/05/2008	09:00 - 10:00	24
5	16/05/2008	10:00 - 11:00	39
6	16/05/2008	11:00 - 12:00	68
7	16/05/2008	12:00 - 13:00	125
8	16/05/2008	13:00 - 14:00	322
9	16/05/2008	14:00 - 15:00	102
10	16/05/2008	15:00 - 16:00	88
11	19/05/2008	08:00 - 09:00	18
12	19/05/2008	09:00 - 10:00	22
13	19/05/2008	10:00 - 11:00	44
14	19/05/2008	11:00 - 12:00	75
15	19/05/2008	12:00 - 13:00	189
16	19/05/2008	13:00 - 14:00	255
17	19/05/2008	14:00 - 15:00	99
18	19/05/2008	15:00 - 16:00	75
19	19/05/2008	16:00 - 17:00	25

iCount500-IR

The iCount500-IR is a fully networked counting solution designed to automatically retrieve data from multiple stores/entrances/exits over a company network (LAN, VPN or WAN) or the internet. It is a bi-directional counter providing both count in and count out.

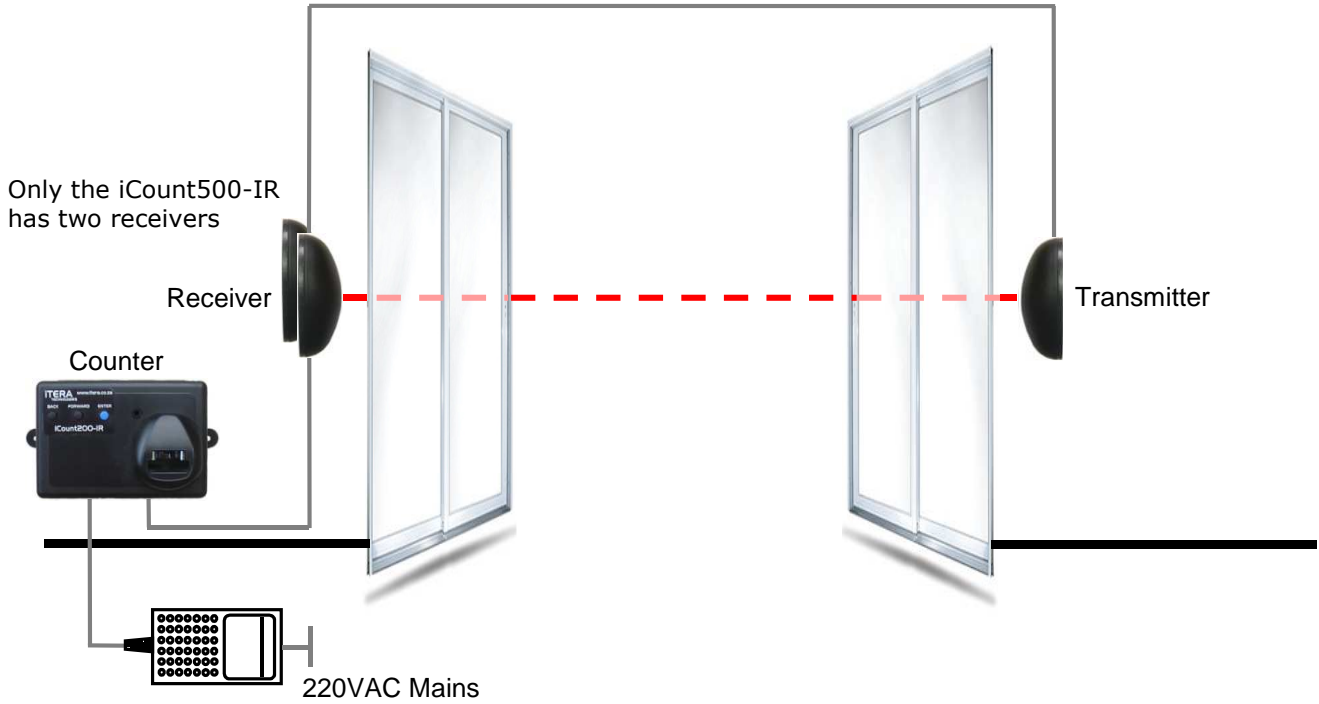
The Traffic Count software, which is installed on a server, is responsible for actively pulling data from all the counters and storing the data in a SQL data base. It features a reporting tool for generating and automatically emailing reports. Traffic Count software consists of a Control Panel application and web based dash board.



Installation

The transmitter and receiver units are installed at the entrance. The receiver unit feeds data back to the counter which is installed elsewhere in the store close to a mains power point e.g. back office, at POS desk.

The entire system runs from a single power supply unit.



Specifications

	iCount100-IR	iCount200-IR	iCount500-IR
Memory Capacity	Hourly log 6weeks	Daily log 2.8yrs	4 weeks
Logging Interval	Hourly or daily	Hourly	Hourly
Sensing Distance	Up to 20m	Up to 20m	Up to 20m
Directional	Uni-directional (<u>cannot</u> distinguish in and out)	Uni-directional (<u>cannot</u> distinguish in and out)	Bi-directional (<u>can</u> distinguish in and out)
Mounting	Above waist height on either side of entrance or exit	Above waist height on either side of entrance or exit	Above waist height on either side of entrance or exit
Data Retrieval	Read off LCD	Download via iButton	Over company network (WAN) or internet
Counter Power	15VDC (Power supply)	15VDC (Power supply)	15VDC (Power supply)
Transmitter and Receiver Power	From counter	From counter	From counter

FAQ

Q: If two people walk in side-by-side, will they be counted as a single 'person'?

A: Yes they will. Bear in mind that in a retail environment this is often desirable since a couple entering a store can be considered a single 'purchasing unit'.

Q: Are the unit's waterproof and can they be used outdoors?

A: The standard transmitter and receiver unit's are for indoor use however there are waterproof and dustproof version available which can be used outdoors. The counter is not waterproof and must be installed indoors.

Q: Can the counter be set to automatically divide the count by two?

A: Yes this is possible via the counter set up menu.

Q: Does each entrance require a separate counting system?

A: Yes. The counters work independently from one another and do not communicate with one another.

Q: Will the counter register a swinging arm as a count?

A: No it will not. The counter requires a body to pass through the beam before it registers a count.

Q: Can the beam pass through glass doors?

A: Yes it can, however tinted or frosted glass will severely reduce the sensing distance.

Q: With the iCount200-IR, must the same iButton be used on the same counter?

A: No, any iButton can be used on any counter. Remember once data has been downloaded onto an iButton from a counter, this data must first be transferred to the PC data base via iCapture before it can be used on another counter.