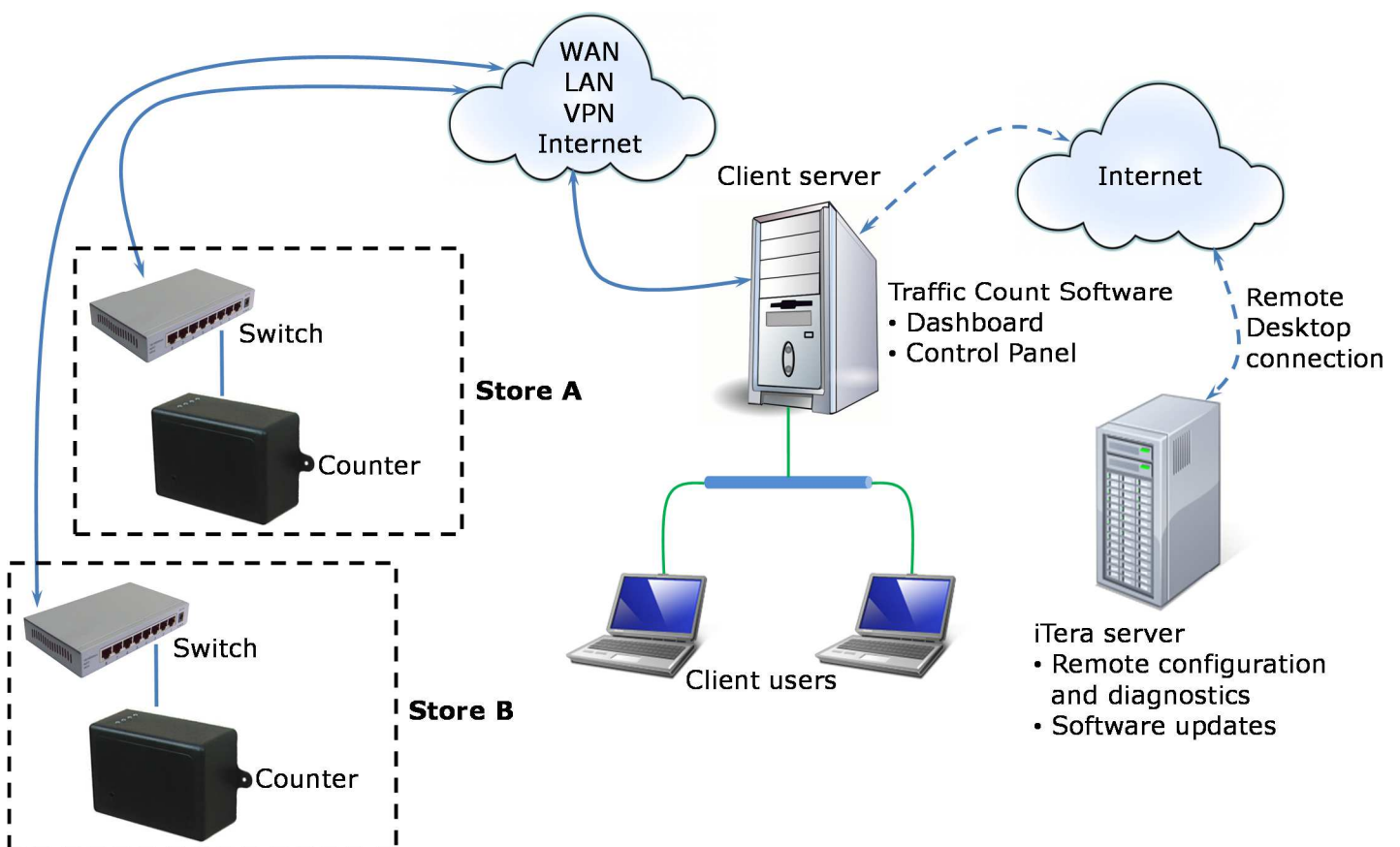


Traffic Count Software

The iCount500 series people counters are a fully networked people counting solution designed to automatically retrieve data from multiple stores/entrances/exits over an existing network (LAN, VPN or WAN) or the internet. It is a bi-directional counting system providing both Count In and Count Out.

The Traffic Count software, which is installed on a central server, is responsible for actively pulling data from multiple counters and storing the data in a SQL data base. It features a reporting tool for generating and automatically emailing reports.

Traffic Count software consists of the a Control Panel application and web based Dashboard.



Web Based Dashboard

1. Reporting Tool

Generate reports and graphs in the following formats:

- Flat file format (comma separated value - CSV) for any time interval.
- Aggregated graphs printed to PDF:
 - Hourly
 - Weekly by Day
 - Monthly by Day
 - Monthly by Week
 - Yearly

2. Counter Information

View information about all the counters such as:

- Hardware and software versions
- IP address, port address and MAC address
- Error status

3. Opening and Closing Times

Configure the opening and closing times of each the store.

4. Report Emailing

Automatic emailing of CSV reports on a scheduled basis.

The screenshot shows the 'Traffic Count' dashboard with a navigation bar at the top containing 'My Counters', 'Reports and Graphs', 'Report Delivery Schedule', and 'Counter Operating Times'. The main content area is divided into two columns. The left column has three sections: 'Counters' with a 'Select Group' dropdown set to 'All' and a 'Select Counter' dropdown set to 'Sandton'; 'CSV Report' with 'Select Start Date' and 'Select End Date' input fields and a 'Generate CSV' button; and 'Counter Info' with a 'General Counter Info' section containing fields for Device Model (iCount500-4R), Hardware Version (1.00 MOD_A), Software Version (1.04 TC), and Date Commissioned (2013/12/17 08:10:44 PM). The right column contains 'Counter Health Info' with fields for Scan Attempt (2013/12/18 09:05:46 AM), Counter Status (Online), Error Status (No Errors), and Battery Voltage (3.23 Volts); 'Counter Data Retrieval Info' with fields for Data Retrieval attempt (2013/12/18 09:08:30 AM) and Data Collection Status (Success); and 'Network Settings' with fields for IP Address (192.168.1.23), Port Number (10001), and Mac Address (0204AF2EB94).

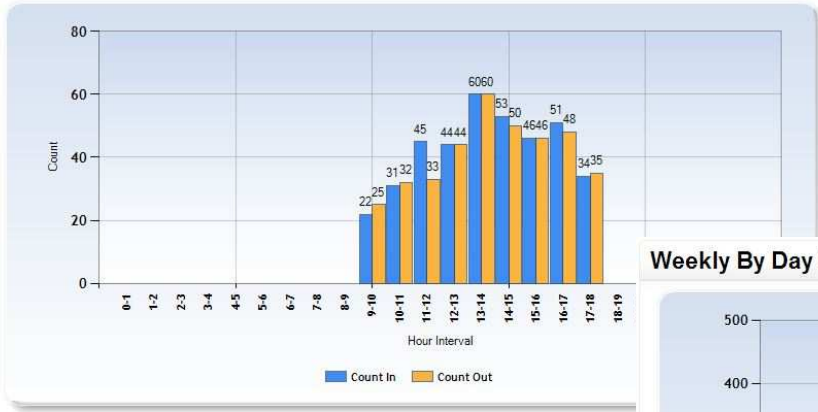
Generate graphs for viewing and export to PDF.

The screenshot shows the 'Traffic Count' dashboard with a navigation bar at the top containing 'My Counters', 'Reports and Graphs', 'Report Delivery Schedule', and 'Counter Operating Times'. The main content area is divided into two columns. The left column has a 'Select Report Type' dropdown set to 'Daily'. The right column has a 'Daily Report Input Parameters' section with a 'Select Start Date' input field set to '2013/11/23' and a 'Generate' button. Below this is a 'Daily People Count Report - Sandton (2013/11/23)' section featuring a bar chart. The chart shows 'Count In' (blue bars) and 'Count Out' (orange bars) over a 24-hour interval. The y-axis is labeled 'Count' and ranges from 0 to 80. The x-axis is labeled 'Hour Interval' and ranges from 0-1 to 23-24. The data points are: 0-1: 22, 1-2: 25, 2-3: 31, 3-4: 32, 4-5: 45, 5-6: 33, 6-7: 44, 7-8: 44, 8-9: 44, 9-10: 45, 10-11: 51, 11-12: 53, 12-13: 60, 13-14: 60, 14-15: 53, 15-16: 51, 16-17: 48, 17-18: 34, 18-19: 35. Below the chart is a 'Filtering' section with a checkbox for 'Show Count Out Values' which is checked. At the bottom right is an 'Export to PDF' button. Below the chart is an 'Export File' section with the text 'Daily People Count Report - Sandton (2013/11/23).pdf' and a 'Generate PDF' button.

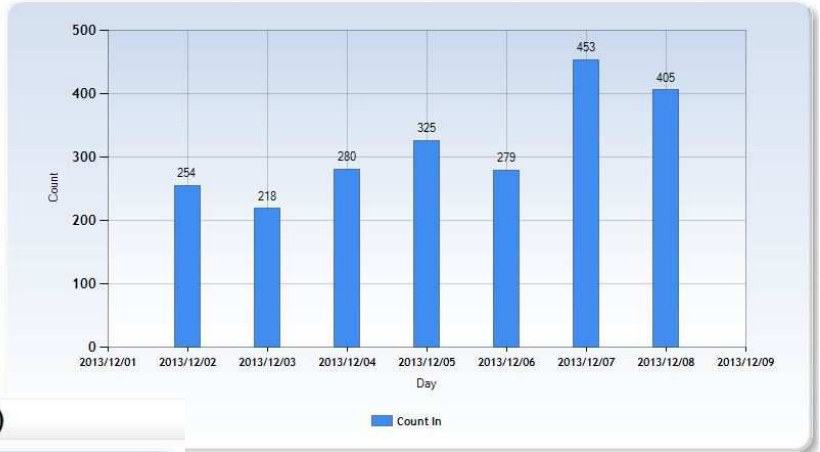
Filtering to view Count Out values.

Export graph to PDF.

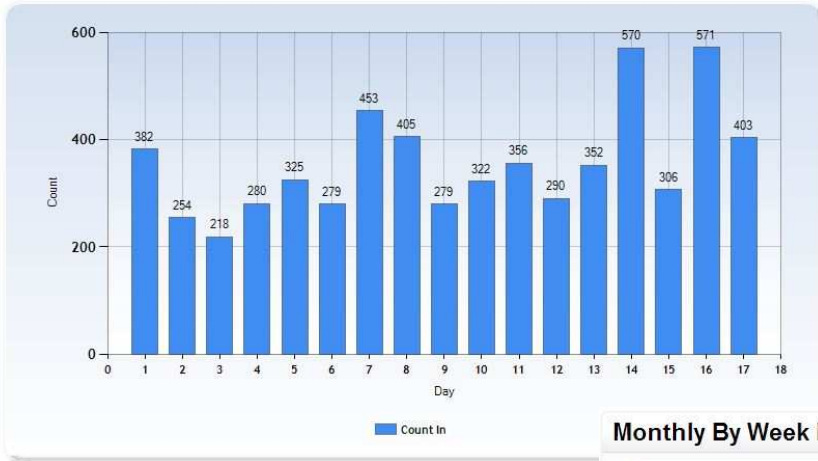
Daily People Count Report - Sandton (2013/11/23)



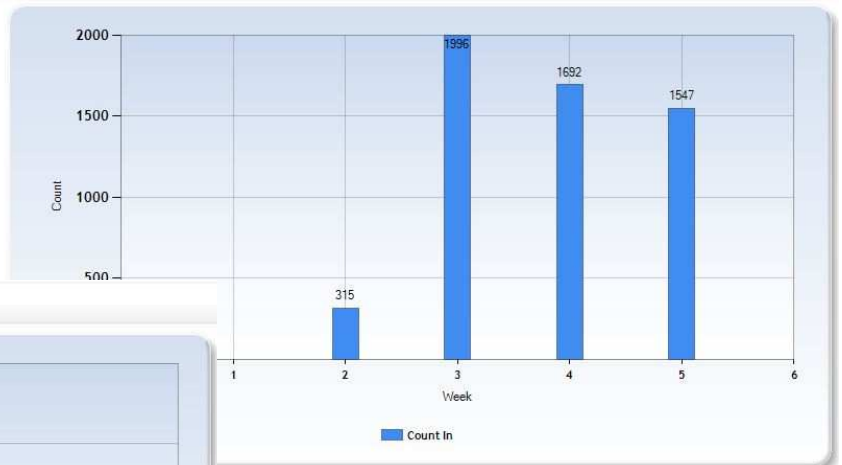
Weekly By Day People Count Report - Sandton (2013/12/02 - 2013/12/08)



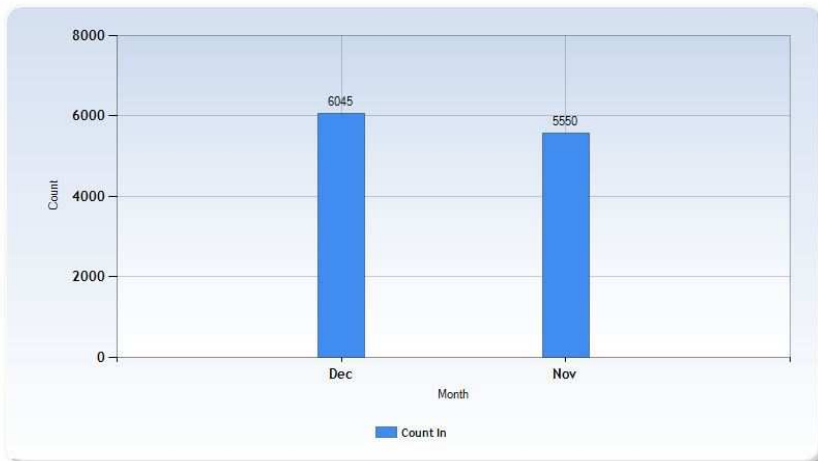
Monthly By Day People Count Report - Sandton (2013/12)



Monthly By Week People Report - Sandton (2013/11)



Yearly People Count Report - Sandton (2013)



Control Panel



Counter Commissioning
Commission, edit and delete
counters.



Data Retrieval Scheduling
Set up a 'collection window' and
'scan interval' which determines
when data should be retrieved
from the counters over the
network or internet.



Windows Services
Easily start and stop the various
Windows services.